

Project

Type

Notes

INSPEXTOR

POE COMPONENTS

INSPEXTOR® LED POE SYSTEM

MHTi Inspextor



Inspextor Server

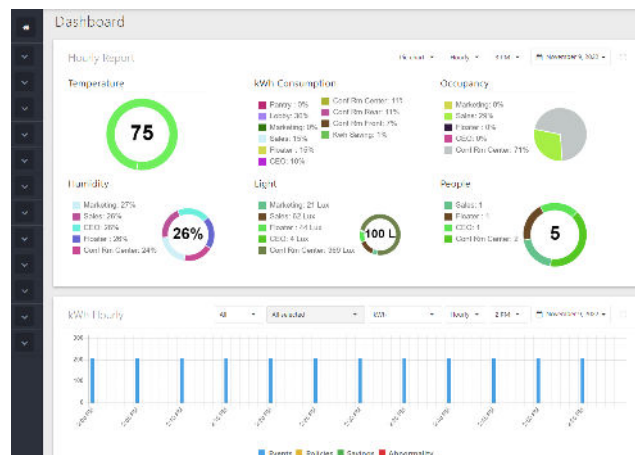
FEATURES

- ✓ The Inspextor PoE system allows users To control thousands of MHTi and third party fixtures LED fixtures across it's MHTi based communication network.
- ✓ Our POE lighting system provide the advantage of time and cost savings during Installation, reduced risk of electrical fires creating a safer living environment, diagnostics of the PoE network and connected PoE equipment.
- ✓ Provides daylight harvesting capabilities and monitoring of kW consumption, occupancy and ambient temperature throughout the building.
- ✓ Timeline function easily provides reporting on past and present events, while listing future scheduled events
- ✓ Easily and quickly adjust lighting policies
- ✓ Delivers real-time alerts based on pre-determined parameters

SPECIFICATIONS

- ✓ Hardware vendor - superMicro
- ✓ Rack mounted unit
- ✓ Intel Atom Processor C2550
- ✓ 8GB memory, 1TB HDD
- ✓ Power supply - 200W, 100-240V, 50-60Hz, 3-15A Amp Max
- ✓ Dimensions - 1.7"H x 17.2"W x 9.8"D
- ✓ Gross Weight - 12lbs
- ✓ See manufacturers data sheets at;
<https://www.supermicro.com/products/system/1U/5018/SYS-5018A-MLTN4.cfm>

PROJECT:

PART NUMBER:
inspeXtor®APPLICATIONS:
inspeXtor®
POESYSTEM

Manage Policy

NAME: Enter policy name

POLICY TYPE: Regular

TARGET CLUSTERS

MIN LEVEL: 40%

LIGHT DENSITY: 10%

☒ NO COLOR TUNE

☒ MOTION NOT ACTIVE

SCHEDULE TYPE: Time "Will trigger when time match"

START TIME: Pick a Time

END TIME: Pick a Time

DAYS OF WEEK: ☐ SUNDAY ☐ MON ☐ TUE ☐ WED ☐ THU ☐ FRI ☐ SAT ☐ SUN

☐ SELECT ALL

Save **Cancel**

MHT Technologies

Innovation Lab: 241W. 37th St., Suite 1202, New York City, NY 10018
HQ & Warehouse: 1961 Richmond Ter, Staten Island, NY 10302

Tel: 718 524 4370

www.mht-technologies.com